

Program

26.5.2016 Villa Lanna

9:00 – 12:00

Kamila Řasová, Department of rehabilitation, Third Medical Faculty, Charles University, Prague: Different approaches in neurological physiotherapy – introduction into the workshop

Marcela Lippertova-Grünerova PhD, MSc. Head of Department of rehabilitation, Third Medical Faculty, Charles University, Prague: Introduction into neurorehabilitation

Anna Hogenová, a philosopher – phenomenologist, Faculty of philosophy, Charles University, Prague: What does mean the word Understanding?

Jan Vacek, Department of rehabilitation, Third Medical Faculty, Charles University, Prague, Head of Czech Society of Rehabilitation and Physical Medicine: Treatment of functional pathology of musculoskeletal system

Alena Kobesová, Faculty hospital Motol: Dynamic Neuromuscular Stabilization

12:00 – 14:00 Lunch

14:00 – 17:00 practical workshops

Šárka Špaňhelová, Lenka Oplatková, Faculty hospital Motol: Vojta reflex locomotion

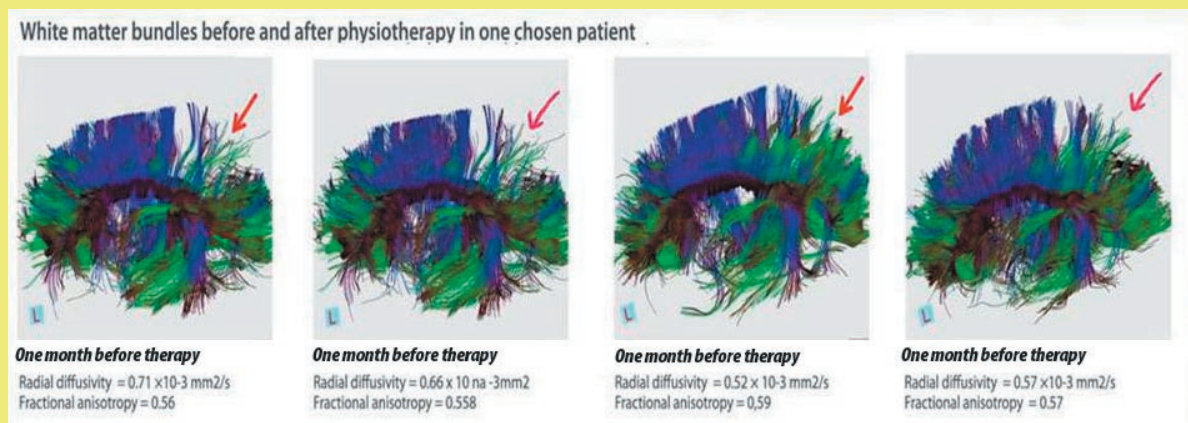
Alena Herbenová, Department of rehabilitation, Third Medical Faculty, Charles University, Prague: Janda approach

Alena Herbenová, Department of rehabilitation, Third Medical Faculty, Charles University, Prague: Sensory Motor Stimulation

Kamila Řasová, Department of rehabilitation, Third Medical Faculty, Charles University, Prague: Motor Program Activating Therapy

18:00 Czech Philharmonic Children's Choir, Tereza Bystřická, choirmistress

19:00 Welcome dinner



27.5.2016

Auditorium Kaple, Third medical faculty, Charles University, Prague

10:00 – 12:00

Antonie Giaver Beiske, MS Senteret Hakadal, Specialized MS rehabilitation with an individual focus

Adnan Heric-Mansrud, MS-Senteret Hakadal, Presentation on Physiotherapy at MS-Senteret Hakadal Specialized Rehabilitation

Elisabeth Gulowsen Celius, Oslo Universitetssykehus, Ullevål, MS-patient care in Oslo

Kjersti Nysted, Sykehuset i Vestfold, Interdisciplinary approach to MS rehabilitation at Kysthospitalet Rehab Hospital in Stavern, southwest of Oslo.

Anette Lie MS rehab and physiotherapy at Vikersund Kurbad

12:00 – 14:00 Lunch and visiting Third Faculty of Medicine, Charles University in Prague and University Hospital Královské Vinohrady in Prague

14:00 – 17:00

Britt Normann, UiT The Arctic University of Norway, Tromsø/Nordland Hospital Trust, Bodø.

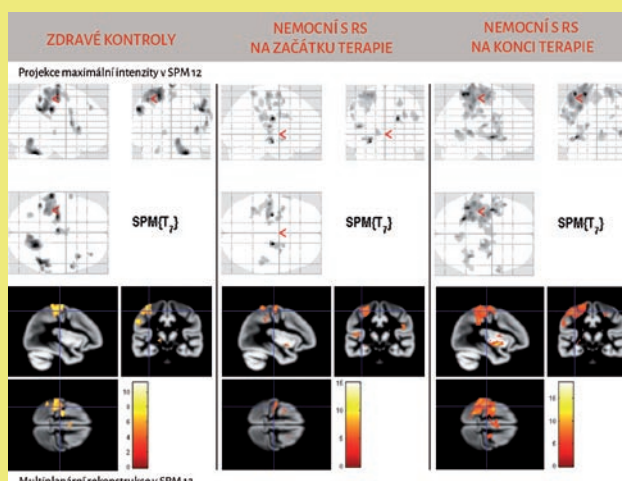
Physiotherapy and professional clinical guidance in an out-patient clinic for people with multiple sclerosis. Body and movement in sense-making and professional development

Ellen Christin Arntzen, Nordland Hospital Trust, Bodø/ UiT The Arctic University of Norway, Tromsø and Britt Normann.

1) Group based individualized core stability and balance training (GroupCoreSIT) in ambulant people with multiple sclerosis: A pilot feasibility test-retest study- Workshop GroupCoreSIT

2) Theoretical and practical presentation of: Group based Individualized Core Stability Training.

Britt Normann; Ellen Christin Arntzen; Andreas Falck Lahelle, UiT The Arctic University of Norway, Tromsø. Presentation of an ongoing study: Innovative Physiotherapy and Coordination of Care in persons with MS: A Randomized Controlled Trial and a qualitative Study.



28.5.2016 Villa Lanna

9:00 – 12:00

Eva Sebroňová, The Technology Centre Academy of Science, Czech Republic:
Potential co-operation in research - Horizon 2020

Patricia Martinkova, [Institute of Computer Science](#) of the [Czech Academy of Sciences](#):
Assessment of Clinical Outcomes in Multiple Sclerosis: Challenges for International
Comparative Studies

Marketa Pavlikova: Potential problems in organisation of multicentre study in
neurorehabilitation. Experience from an international prospective study “Factors
influencing effectiveness of physiotherapy for improvement balance in people with MS”

Prokopusova T., Hruskova N., Rasova K. Effect of functional electrical stimulation used
in corrected posture by Motor program activating therapy on stability and mobility

Rasova K. Sosvorova L., Angel G., Hruskova N., Prochazkova M., Zimova D.,
Stetkarova I., Spanhelova S., Bicikova M. Facilitation physiotherapy influences amount
of neuroactive steroids.

Rasova K., Havlik J., Stetkarova I., Zeman J., Rybnickova M., Angel G., Vavrova D.,
Sedlakova B., Zimova D., Nemeckova M., Szentpetery T. Frequency spectrum pattern
of postural oscillatory movement in multiple sclerosis using an accelerometer: a pilot
study.

Rydlo J., Prochazkova M., Tintera J., Hlinka J., Spanhelova Š., Prokopusova T.,
Angelova G., Vavrova D., Sosvorova L., Rasova K. Perception of kinetic movie scenes
by multiple sclerosis and its changes after regular physiotherapy – fMRI study.

Rasova K. Ibrahim I., Tintera J., Skoch A., Jiru F., Hlustik P. Martinkova P., Zvara
K., Fractional anisotropy and mean diffusivity in the corpus callosum of patients with
multiple sclerosis: the effect of physiotherapy

12:00 – 14:00 Lunch

14:00 – 18:00

Discussion of Czech and Norway experts about possibility of research project and
consensus of Czech and Norway experts on co-operation



UiO **Institute of Clinical Medicine**
University of Oslo

