

## O Euractu

Jáchym Bednář,  
praktický lékař, školitel, učitel 1.LF, ÚVL, Praha 2  
zástupce ČR v [www.euract.eu](http://www.euract.eu), network WONCA

# EURACT – European Academy of Teachers in General Practice/Family Medicine

- Launched in 1992 – 1992 – prof. Jan Heyrman, Belgium
- Provides support for teachers as an organisation for individual membership
- Network organisation responsible for education within WONCA Europe
- Overall aim is to foster and maintain high standards of care in European general practice by promoting general practice as a discipline by learning and teaching

# BME, ST, CPD/CME:

- Euract je organizace v rámci WONCA, zabývající se výukou v všeobecném praktickém a rodinném lékařství,
- **vytvářením, aktualizací, šířením a udržováním výukových standardů v Evropě**
- BME- pregraduálně, ST – v předatestační přípravě, v CPD/CME – celoživotním vzdělávání

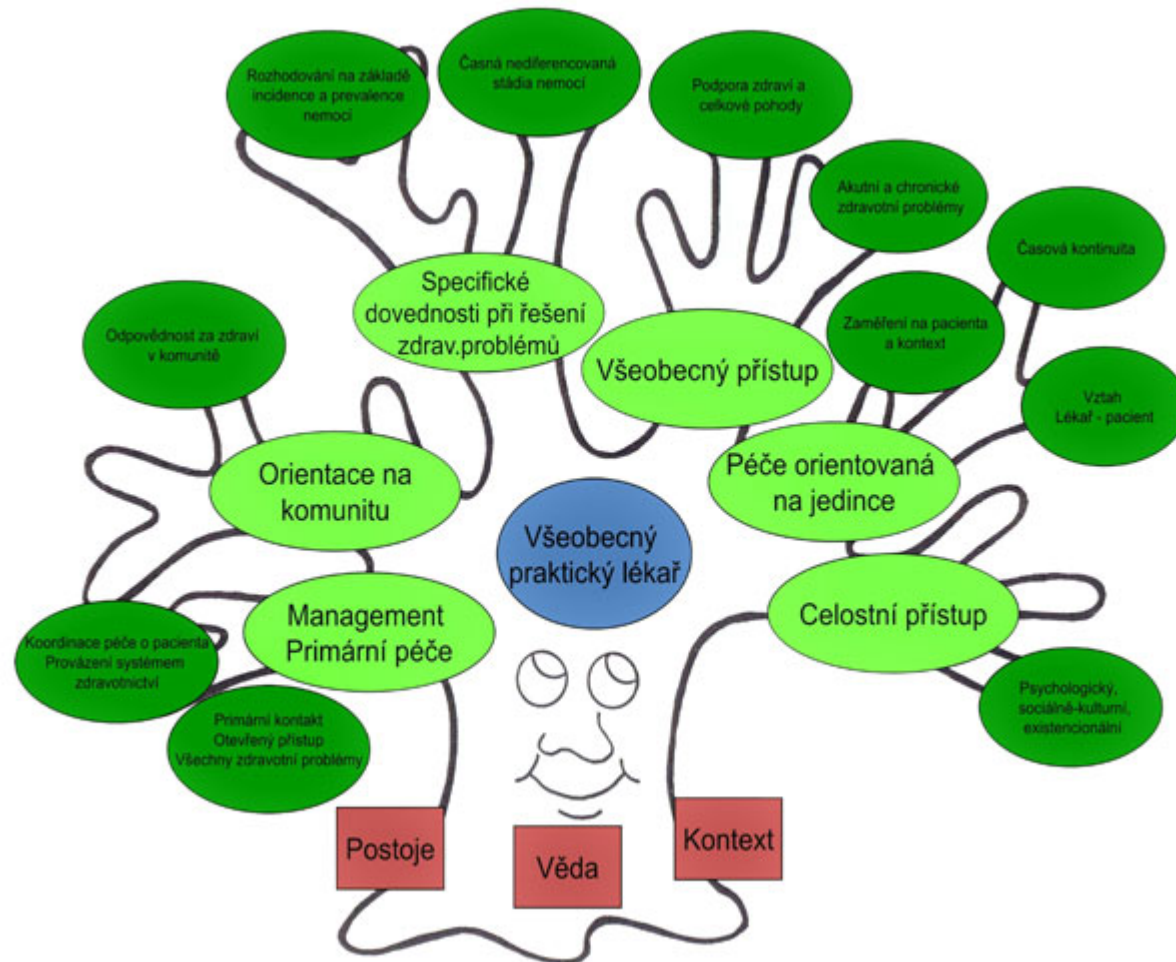
# EURACT documents / activities

<http://euract.woncaeurope.org>

- European Definition of Family Medicine, 2002
- EURACT Educational Agenda of General Practice/Family Medicine, 2005
- EURACT Performance Agenda of General Practice/Family Medicine, 2014
- EURACT International Bled Course, yearly since 1991
- Leonardo Teachers' Course (at 3 levels)
- EURACT Assessment Course, restarting 2019
- EURACT Medical Education Conference, biennially since 2016 ( 2018, 2020 postponed to 2021)



# WONCA strom :



# BME committee:

The BME Committee aims to improve undergraduate teaching and learning in family medicine by further developing undergraduate medical education through:

- providing mapping of the BME situation in Europe;
- providing a minimal core curriculum to be used;
- underlining the usefulness of early clinical exposure;
- creating checklists for course organisers;
- issuing statements on the necessity of this teaching in all medical universities;
- strengthening teaching by getting advice from professionals from all European countries;
- helping in developing European curriculum standards in family medicine for undergraduates.

# ST committee:

The ST committee aims to improve patient care in family medicine by further developing general practice specialty training. We do this by:

- giving an overview of specialty training programs in Europe;
- identifying needs for improvement of training programs;
- providing tools that countries could use to improve their quality of teaching in specialty training.

# CPD/CME committee:

The CPD committee aims to improve teaching in family medicine by further developing general practice continuing medical education. We plan to achieve this by:

1. giving an overview/comparison of CME systems in Europe;
2. identifying the learning needs of teachers in CME
3. providing appropriate tools and methods that teachers could use to teach themes existing in CME on our website
4. These tools/methods may be presented as live courses (peers to peers ) or as written publications, guidelines, online programs, e-lectures

We implement these aims using the expertise of Euract teachers

# BME: Minimal Undergraduate Teaching Curriculum – **důležitost témat** in Europe – Delphi metoda – studie Euractu

- 1 26 hlasů - Introduction to FM/GP as a specific medical discipline. Principles of family medicine: continuity, comprehensiveness, coordination of care
- 2 21 hlasů - Holistic approach / bio-psycho-social model
- 3 20 hlasů - Management of diseases at early, undifferentiated stage / dealing with uncertainty
- 4 17 hlasů - Communication skills: with patient, with patient's relatives, and with "difficult" patients.
- 5 17 hlasů - Management of multiple health problems, identifying priorities.
- 6 17 hlasů - Decision making based on prevalence/incidence of target conditions/disease prevention.
- 7 17 hlasů - Prevention and health promotion, patient education.
- 8 16 hlasů - Patient-centeredness
- 9 16 hlasů - Consulting skills – stages of a consultation
- 10 15 hlasů - Chronic disease care/management of chronic diseases/ health problems /diabetes/ hypertension/ CHD/ Obesity
- 11 14 hlasů - The family as a source of disease and resource of care/ genograms/ family life cycle
- 12 13 hlasů - The specific of healthcare in FM: all ages, male and female, curative care, prophylactic care, emergencies.
- 13 12 hlasů - Community orientation /community centered care/ community needs assessment
- 14 12 hlasů - Most common presenting symptoms in family practice
- 15 10 hlasů - Interface of primary and secondary care: referrals, gate keeping, advocacy

# ST / Educational Requirements for GP Specialty Training:

Collaborative document entitled 'Educational Requirements for GP Specialty Training'. Through an iterative process existing documents from the European Academy of Teachers in GP and Family Medicine (EURACT) and the World Organization of Family Medicine Doctors (WONCA) were collated.

State-of-the-art GP specialty training 'core' competences, characteristics and essential features of GP are described. General principles and specified tools for training and assessment are summarised.

Recommendations on the duration and place(s) of training and selection of trainees are provided.

# EURACT Continuing Medical Education (CME) Committee

- The CME Committee aims to improve teaching in family medicine by further developing general practice continuing medical education
- An online CME/CPD Dynamic Interactive Database provides country-specific data here: <http://euract.woncaeurope.org/cme-cpd-data-base>

# Activities of EURACT CME Committee

- 2004-7: ‘Make your Personal Learning Plan!’, a workshop manual to support all teachers and trainers in general practice/family medicine in guiding GPs and GP trainees in updating their knowledge and skills (<https://euract.woncaeurope.org/resources>)
- Regularly facilitates workshops during
  - WONCA conferences
  - EURACT Medical Education Conferences (Dublin 2016, Leuven 2018)



# EURACT CME study 2014-2015

- Provided a comprehensive and comparative account of CME/CPD models, approaches and practices for GPs in Europe
- Questionnaire to EURACT members (n=42)
- Answers had to be based on valid references (local documents, legislation, written rules)
- Responding countries – 38
  - Western countries – 21
  - Eastern countries – 17

- 2019: developing Policy Statement  
Best Practice in CME/CPD - document  
summarizing up to date knowledge on CPD/CME  
  
in Europe, not in world

# 2019: developing backup document describing CPD/CME in Europe as a mosaic of all available activities

- 1. current state of the evidence base for effective CME for FDs
- 2. How to identify learning needs that are relevant to FDs
- 3. options for the delivery of educational interventions and describe the advantages and disadvantages of these options
- 4. options for the delivery of educational interventions to meet specific primary healthcare needs reflecting changing society
- 5. a how to assess the effectiveness of educational interventions
- 5. b research in CPD/CME
- 6. specific areas: low resource countries, isolated doctors
- 7. differences of delivery of CPD/CME between Europe and world , what is specific for Europe CPD /CME ?
- 8. technology / telemedicine in primary care
- 9. professionalism in GP

# Leonardo kurzy pro školitele

Euract: autor, poskytovatel, odborný garant,  
sponzor Leonardo kurzů

**Mezinárodní Leonardo kurz LEVEL 1 uveden v České republice**  
byla poptávka, protože od r. 2009 atestují větší počty lékařů, kteří chtějí školit  
[www.leonardoprague2019.cz](http://www.leonardoprague2019.cz) - přihlášeno 60 lékařů/ přijato 36 lékařů z 12 zemí, 11 lékařů bylo z ČR

**Leonardo Level 1, Prague**

Venue

Accommodation

Participants

Registration

Program

Transport



# Leonardo Level 1, Prague 2019

## Prague, 23-25 May 2019

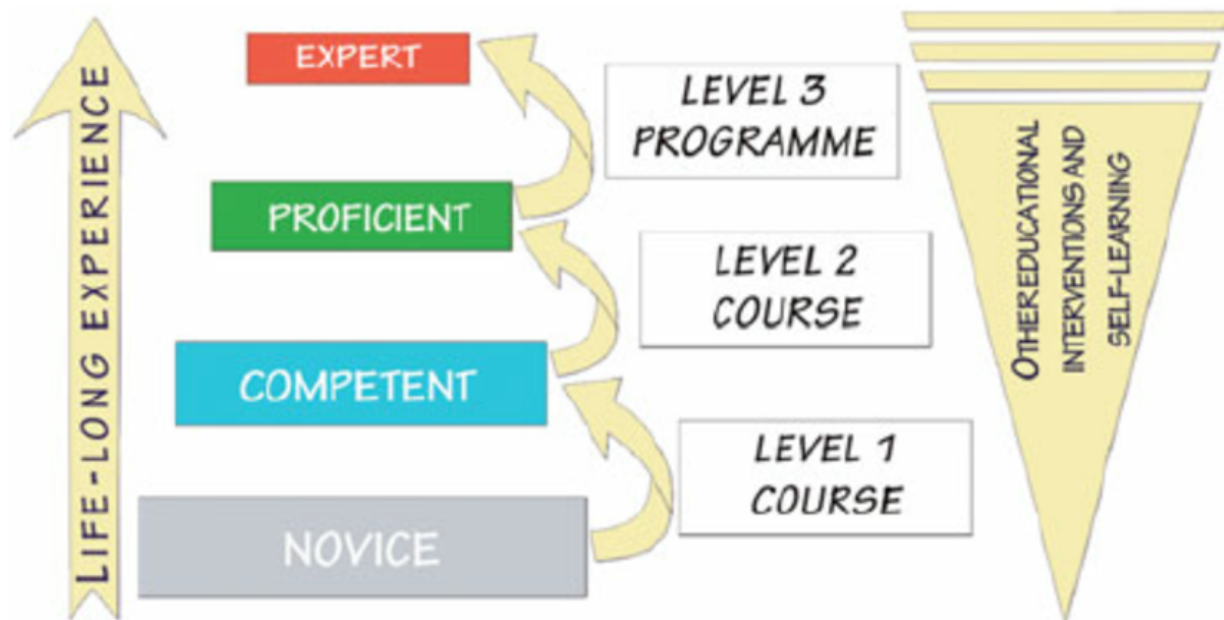
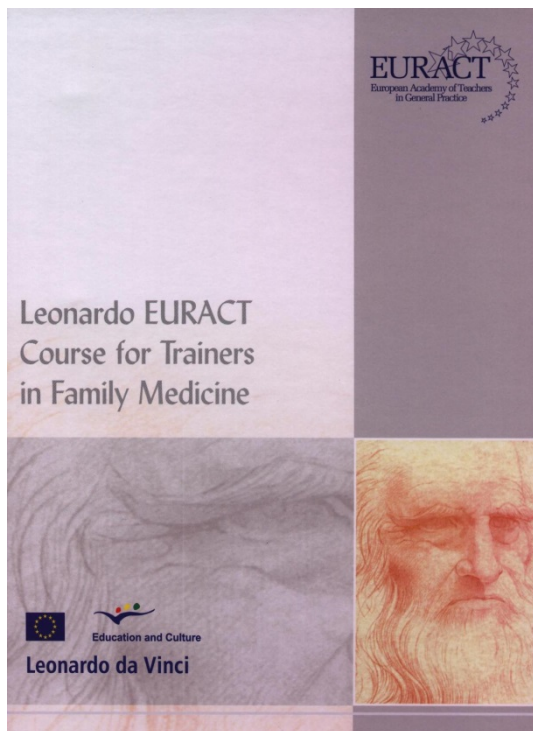


Dear colleagues,

It is a great pleasure and honour for The Czech Society of  
General Practice to be a host organizer for **Leonardo EURACT**

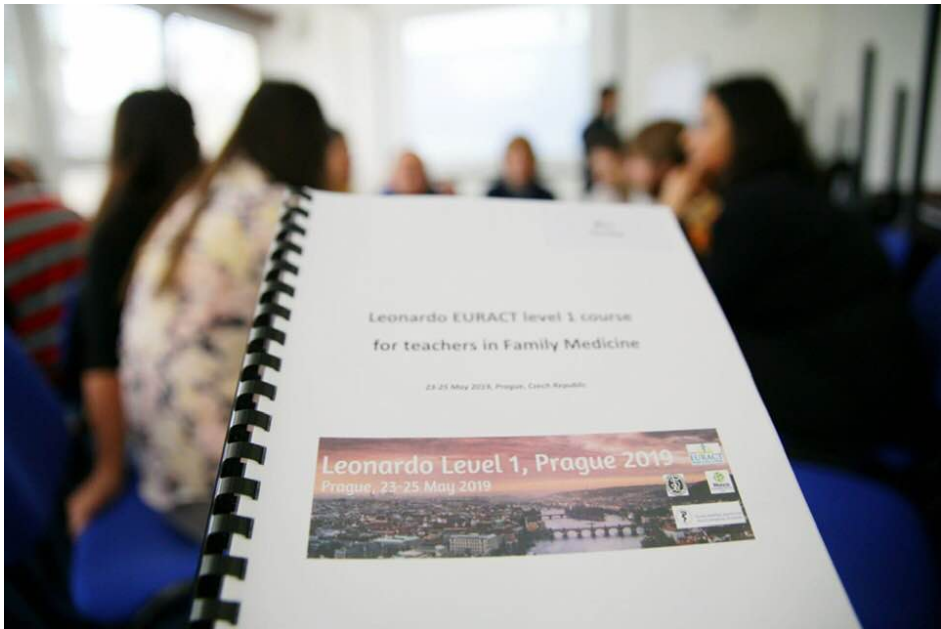
Leonardy kurzy 1, 2, 3 : kurzy s propracovanou, osvědčenou metodikou, probíhají pod vedením lékařů/ školitelů z Euractu

Mají za cíl dlouhodobě a systematicky zlepšovat kvalitu výuky v praktickém lékařství v evropských zemích a postupně předat odpovědnost za pořádání kurzů a výuky učitelů do jednotlivých zemí, podporovat profesní vývoj školitele  
Euract garantuje standard kvality kurzu a poskytuje podporu –know –how, materiály, značku, školitele, certifikáty





# Leonardo Prague LEVEL 1 – 23-25 MAY 2019





# Leonardo Prague LEVEL 1 – 23-25 MAY 2019





# Leonardo Prague LEVEL 1 – 23-25 MAY 2019



# Zpětná vazba od absolventa kurzu

- .....Po absolvování Leonardo kurzu **se cítím o dost kompetentnější a jistější.**
- Zároveň však cítím mnohem silnější potřebu si výuku či stáž pečlivě připravit, strukturovat a **dbát na individuální potřeby školence.**
- Byl jsem přesvědčen, jak důležité je si na začátku stáže, ale také opakovaně v jejím průběhu si společně se školencem ověřovat, **jaké jsou jeho aktuální potřeby**, na co je potřeba dát důraz.
- Jeden z hlavních přínosů kurzu pro mě tedy byl pochopit, co to znamená v praxi **„formative assessment“**, a jak je toto **„formativní hodnocení“** možné využívat k motivaci školence a k exploraci jeho potřeb.

Mezinárodní Leonardo 1 probíhá **každý lichý** rok,  
Leonardo 2 **každý sudý** rok, Leonardo 3 příležitostně

- Level 1 určen praktikům v terénu,
- Level 2 pro praktiky v terénu a pro praktiky učící na fakultách,
- Level 3 je užitečnější praktikům učícím na fakultách
- Euract Leonardo kurzy 1 , 2, 3
- již cca 2000 lékařů v Evropě je absolvovalo



Osobnosti evropského praktického lékařství – učitelé  
kolébka výuky učitelů - 1991 Bled kurzy – Slovinsko  
Euract vzniká poté v roce 1992



[Předchůdce kurzů Leonardo: od r. 1991 Bled kurzy https://www.bled-course.org/](https://www.bled-course.org/)

Stále probíhají, ale jsou jinak zaměřeny, slouží kontinuálnímu vzdělávání praktiků/ učitelů- trvají 5 dní a jsou vždy tematicky zaměřené , výsledkem je vždy nový **ready to apply teaching module na dané téma**

V r. 2019 proběhl již 28. ročník - **17. – 21. SEPTEMBER 2019, 2020 zrušeno**



**BC BLED COURSE**  
INTERNATIONAL EURACT

Course

Aims

Sessions

Timetable

Gallery

Registration

We would like to invite you to participate in the **28th international Euract Janko Kersnik** course for family medicine teachers.

**The Bled course is the leading didactic event for family medicine teachers in Europe. It has been held under the patronage of EURACT for 18 years.**

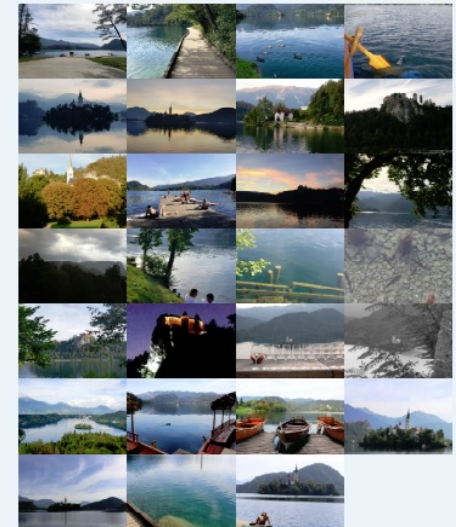
Due to the contribution of international participants and an international organising committee, the yearly topics are approached in a multicultural and internationally applicable manner. The product of the course is a "ready to apply" educational module for family medicine students of various educational levels.

This year's topic is

## TYRANNY OF HEALTH.



The course is held in Bled, in one of the most picturesque places in Slovenia. This milieu encourages networking among experts and is welcoming towards new attendants.



# Leonardo kurz 1- 3 dni

- **Module 1: Introduction – being a good trainer,**
- **Module 2: Basic Education and Assessment Theory,**
- **Module 3: Teaching methods and giving feedback,**
- **Module 4: Learning styles and personal learning plans,**
- **Module 5: Teaching skills/role playing, problem patient cases**
- **Module 6: Preparing the practice and designing the program**
- **Module 7: Competent teacher/ Appraisal program**

# Leonardo kurz 2 – 2 dni

- Module 1: Small group learning,
- Module 2: Problem learners
- Module 3: Teaching from the consultation
- Module 4: Curriculum to programme

# Leonardo 3

## Struktura programu

- Kurz rozdělen na 2 části A-B /v období ½ roku / na 2 místech Evropy/
- před tím a mezitím je čas na domácí přípravu a vypracování projektu, který je předveden na 2. kurzu – B
- **Pre-course work:**
  - 1. Develop a Personal Development Plan as a teacher; discuss with supervisor.
  - 2. Carry out a learning needs analysis of the GP educators in their own programme/region/country.
  - 3. Prioritise learning needs that have been identified and reflect on what educational interventions are needed.
  - 4. Familiarise themselves with the course materials for the Level 2 and Level 1 courses.
- **Course work:**
  - Study Day 1 : 1. Introduction to the programme, presentations. 2. Small group work to identify concrete plans for the project. 3. Develop and share revised personal learning plans. 4. Identify “Buddy”/ co-mentor.
  - C. Personal work between study days: 1. Meet supervisor at least monthly. 2. Keep learning log. 3. Prepare concrete plans for educational intervention(s). 4. Prepare course materials, including a literature review. 5. Regular contact with “buddy”.
  - D. Study Days 2 and 3 : 1. Present plans to group for feedback. 2. Small group work on developing an educational framework. 3. Prepare finite plans for delivery of individual modules revised as necessary. 4. Large group discussion on preparing implementation plans. 5. Publication and promulgation (including WONCA conference). 6. Developing a network.
- **E. Final phase 1. Deliver course. 2. Submit a written report of the whole process (8000 words).**



# Kurz Leonardo LEVEL 1 v Bratislave v dňoch 3. – 6. júna 2021 ( 21.-23.5.2020 zrušen)

- 
- Milé kolegyně a kolegovia,
- Kurz Leonardo (LEVEL 1, 2, 3) je Euractom doporučený na získanie komplexného know-how pre všeobecného lekára – učiteľa, školiteľa v ambulancii alebo vyučujúceho na fakulte a je zameraný na teoretickú a praktickú výučbu metód a schopností, ako vedome, komplexne, kompetentne a čo najobjektívnejšie viesť študentov medicíny a adeptov v odbore všeobecné lekárstvo v špecializačnej príprave.
- Nový termín konania kurzu je 3. - 6. júna ( června) 2021.
- Bližšie informácie ohľadne presného miesta, programu a aj lektorov Vám zašlem. Samozrejme, ak máte otázky, kľudne mi napíšte.
- Budem rada, ak Váš záujem o kurzu pretrvá a stretneme sa budúci rok. Chcela by som Vás poprosiť o zaslanie informácie, či o daný kurz máte záujem.

Ďakujem a želám príjemné leto :)

- MUDr. Iveta Malíková